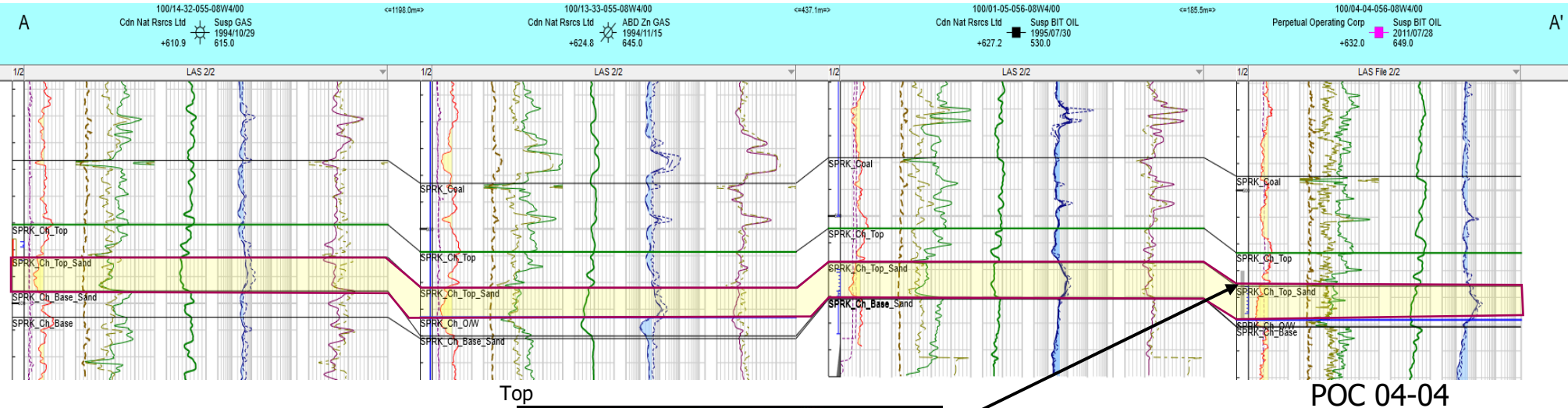


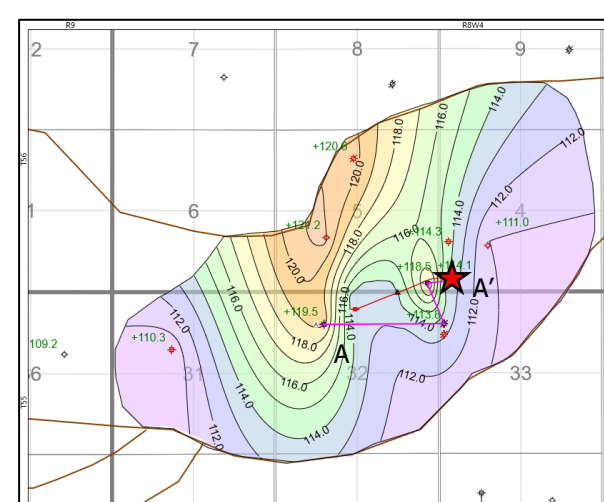
Rubellite Asset Profile | *Eliza*

Sparky Channel Prospect



Top

POC 04-04

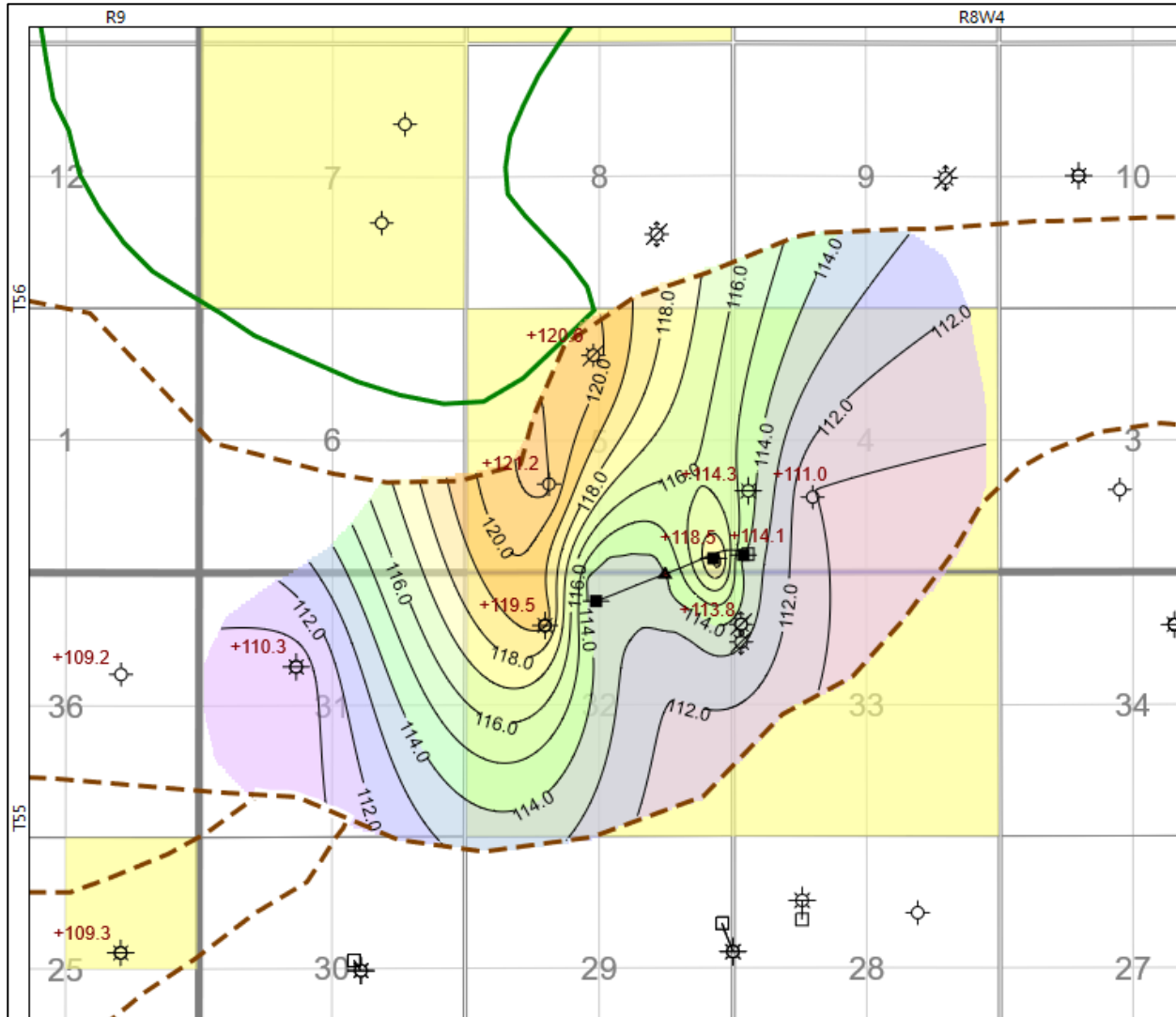


- Clearly defined O/W contact at 108m SS in 13-33 and 04-04
- Core from 04-04, interval 519.35-523.84m (main oil-saturated interval)
- $K_{avg} = 694$ mD
- $\Phi = 33.1\%$

Bottom

Rubellite Asset Profile | *Eliza*

Sparky Structure Map



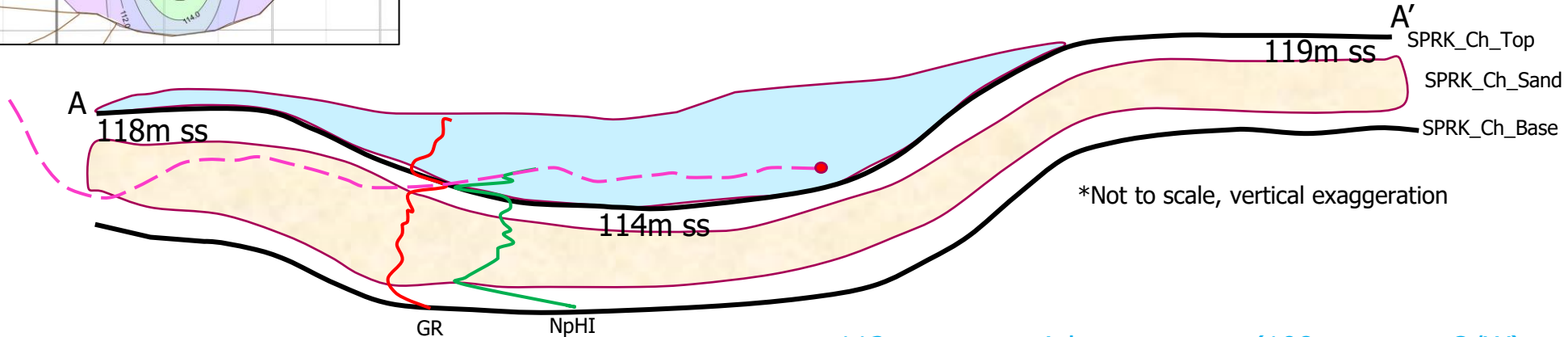
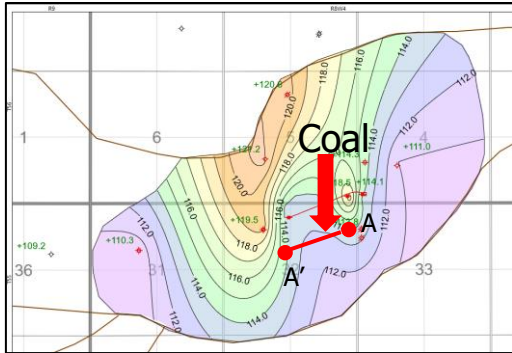
SPRK_Ch Top Sand Structure Map

Contour Interval = 1m
110m ss – 121m ss

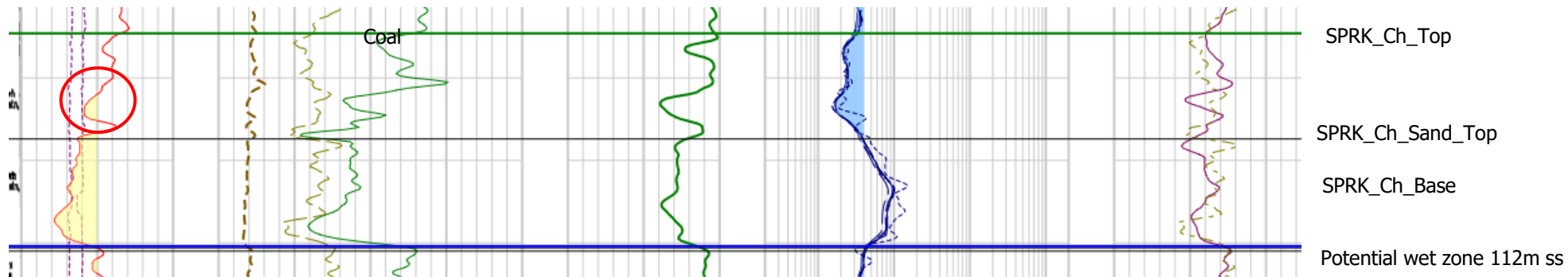
- Hz well was not placed optimally
- Improved well placement to increase performance

Rubellite Asset Profile | Eliza

Sparky Structure Map and possible horizontal schematic



100/01-05-056-08W4

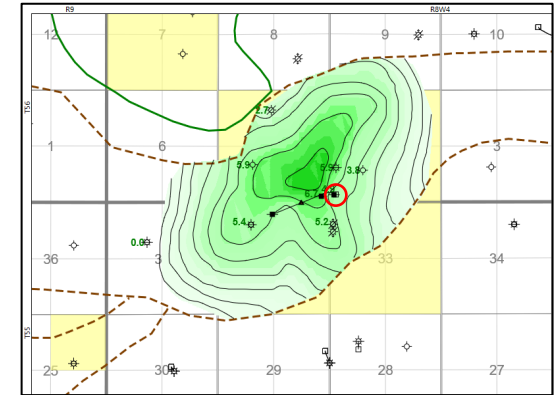
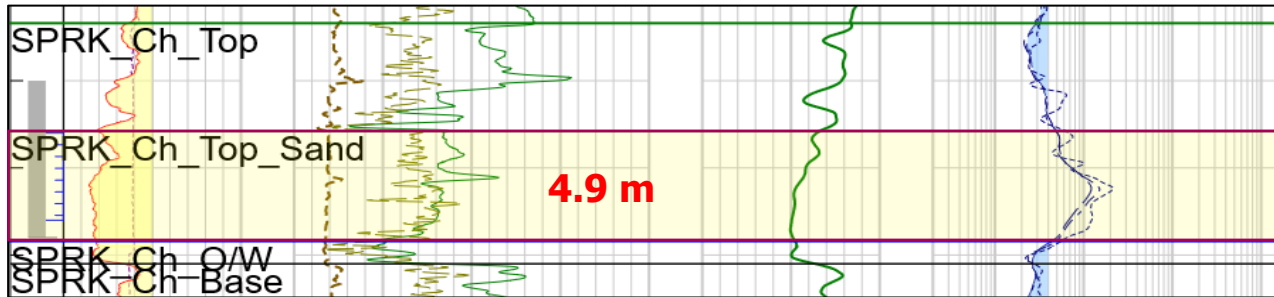


Rubellite Asset Profile | *Eliza*

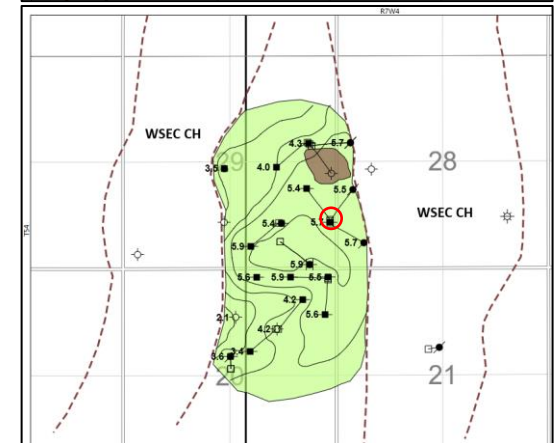
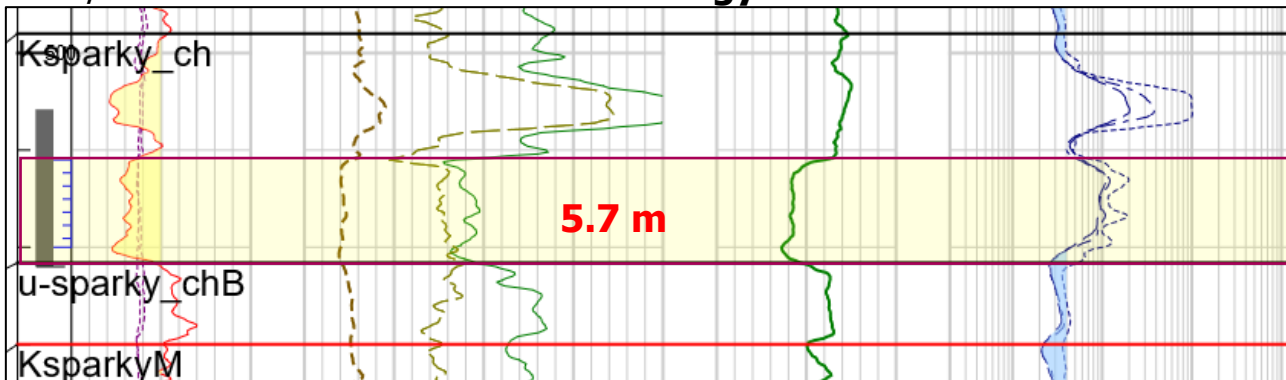
Analog Comparison – Revitalize Derwent Pool



100/04-04-056-08W4 - *Eliza*



100/01-29-054-07W4 – Revitalize Energy



Logs analogous, produced 906 Mbbl total oil cum at Revitalize Energy Derwent pool

Rubellite Asset Profile | *Eliza*

Analog Comparison – Parameter Charts



Parameter	DERWENT	ELIZA
Porosity*	34.6%	33.1%
Permeability* (mD)	634**	694
Sw*	40.3%	38.9%
Average Oil Pay	5.5m	5m
Pressure (kPa)	3,178 at 17.5°C	3,511 at 21°C
Viscosity (cP)	15,531 at 25°C	7,714 – 15,302 at 25°C
Recovery Factor	8%	5%
Area (ha)	167.4	164.9 – 321.0
OOIP (recoverable)	907 Mbbl (produced)	419 Mbbl – 817 Mbbl

*From core analysis

**Kavg from cores 15-20-54-7 (807 mD) and 1-29-54-7 (460 mD)